

# ASSEMBLY INSTRUCTIONS HYDRAULIC-KIT

for hydraulic quick couplers with double-acting cylinder



# CONTENTS

---

NOTES	4
INSTALLATION-KIT	5
PROCEDURE	7
HYDRAULIC CIRCUIT DIAGRAM	8
CONNECTIONS	9
ELECTRICAL CIRCUIT DIAGRAM	11
CUT-OUT FOR SWITCH	12

## IMPRINT

### **HENLE Baumaschinentechnik GmbH**

Ringstrasse 9  
89192 Rammingen

Phone: +49 (0) 73 45 - 96 77 0  
Fax: +49 (0) 73 45 - 96 77 17

[info@henle-baumaschinentechnik.de](mailto:info@henle-baumaschinentechnik.de)  
[www.henle-baumaschinentechnik.de](http://www.henle-baumaschinentechnik.de)

In the latest standard for earth-moving machinery, the legislator stipulates that hydraulic quick couplers with wedge-shaped locking systems must be permanently pressurized (see DIN EN 471-1).

This means that a separate hydraulic circuit must be used for the „open/close quick coupler“ functions. If necessary – and if not available – this must be retrofitted to the excavator.

The installation kit offered by HENLE Baumaschinentechnik GmbH provides you with a basic kit consisting of parts that must be used in any case: control block, distribution block, rocker switch and signal generator.

However, due to the large number of excavator types and the constantly changing equipment, it is not possible for us to offer a complete kit that is „tailor-made“ specifically for your excavator.

Power and hydraulic lines are not included in the scope of delivery and must be configured yourself depending on the excavator type.

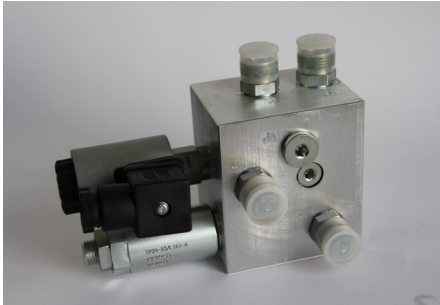
## SCOPE OF DELIVERY INSTALLATION-KIT

Position	Name	Pieces
1	Kit control block 12V/24V	1
2	Kit distribution block	1
3	Rocker switch complete	1
4	Signal generator 12V/24V	1

## SCOPE OF DELIVERY INSTALLATION-KIT

### POSITION 1

Kit control block 12V/24V



### POSITION 2

Kit distribution block



### POSITION 3

Rocker switch complete



### POSITION 4

Signal generator 12V/24V



### STEP 1

Find an easily accessible and sufficiently large space in the engine compartment for the kit control block.

### STEP 2

Lay the hydraulic lines directly from the pumps to the control block.

### STEP 3

Lay the hydraulic line from the oil tank to the control block.



### STEP 4

Install the kit control block in the engine room and connect it.

### STEP 5

Lay the hydraulic lines from the control block over the excavator arm to the distributor block.



### STEP 6

Connect the quick coupler from the distributor block. Make sure that the cables are not kinked and that there are no chafing points.

### STEP 7

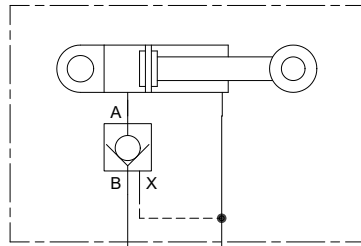
Install the rocker switch and signal transmitter in the machine room. Connect them according to the electrical circuit diagram.

### STEP 8

Check the function.

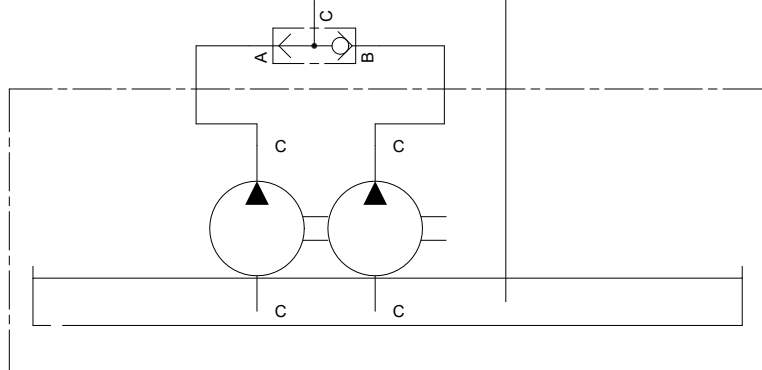
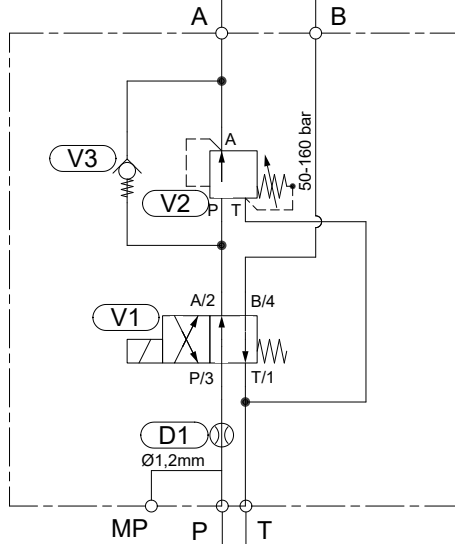
# HYDRAULIC CIRCUIT DIAGRAM

Schematic illustration



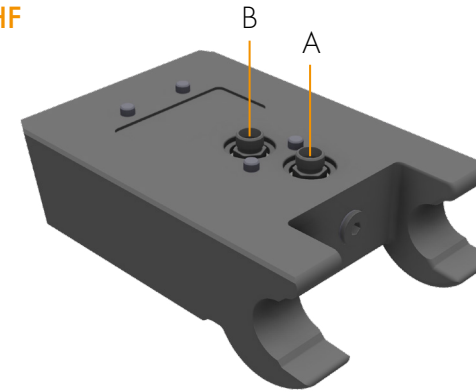
**A** →  
Lock  
locking bolts

**B** ←  
Unlock  
locking bolts



# CONNECTIONS

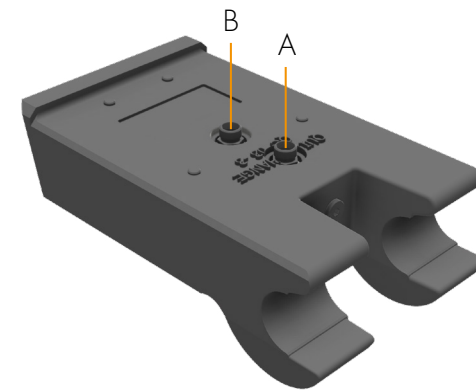
QC01H/HF



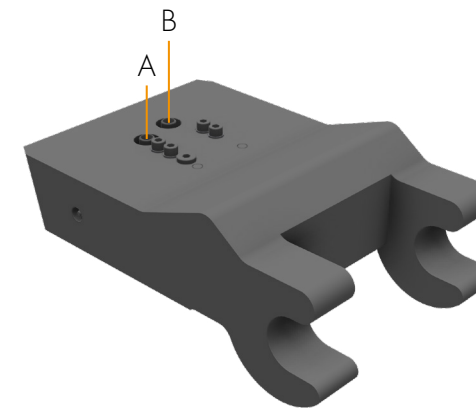
**A** →  
Lock  
locking bolts

**B** ←  
Unlock  
locking bolts

QC03H

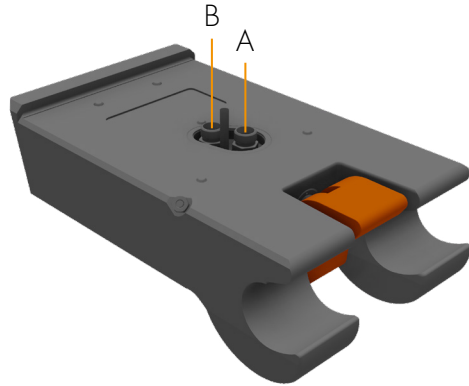


QC08H



# CONNECTIONS

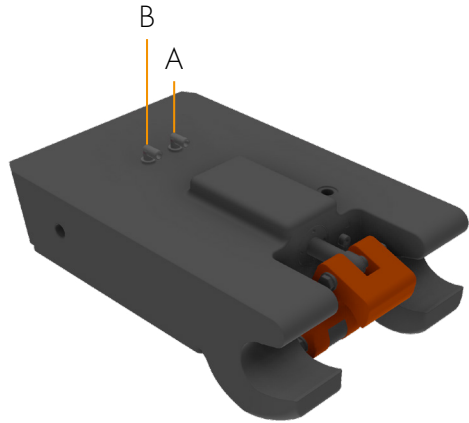
QC03Hp



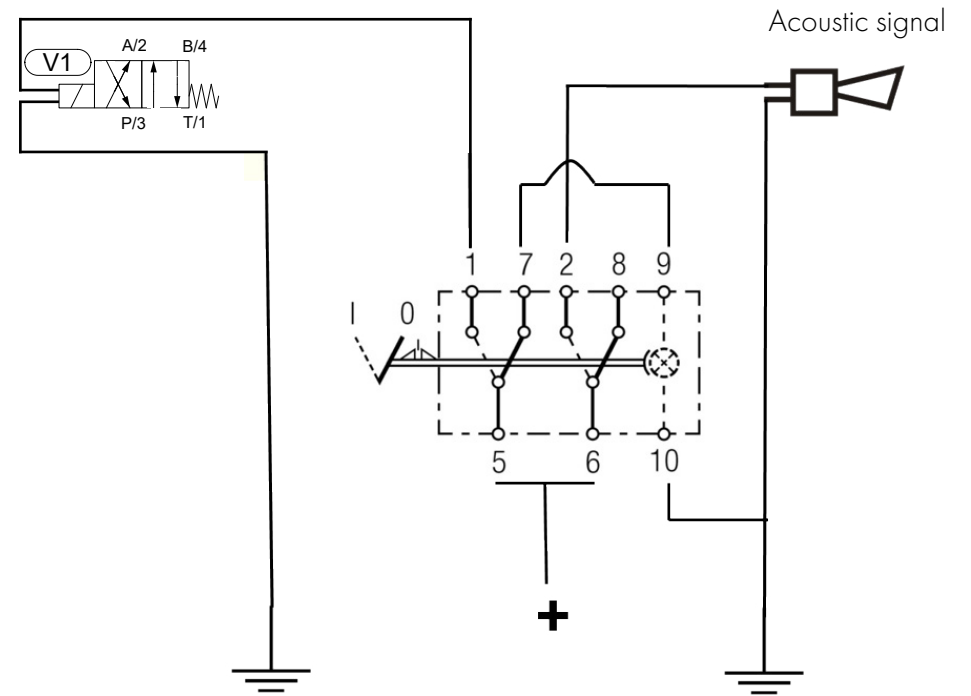
**A** →  
Lock  
locking bolts

**B** ←  
Unlock  
locking bolts

QC08Hp



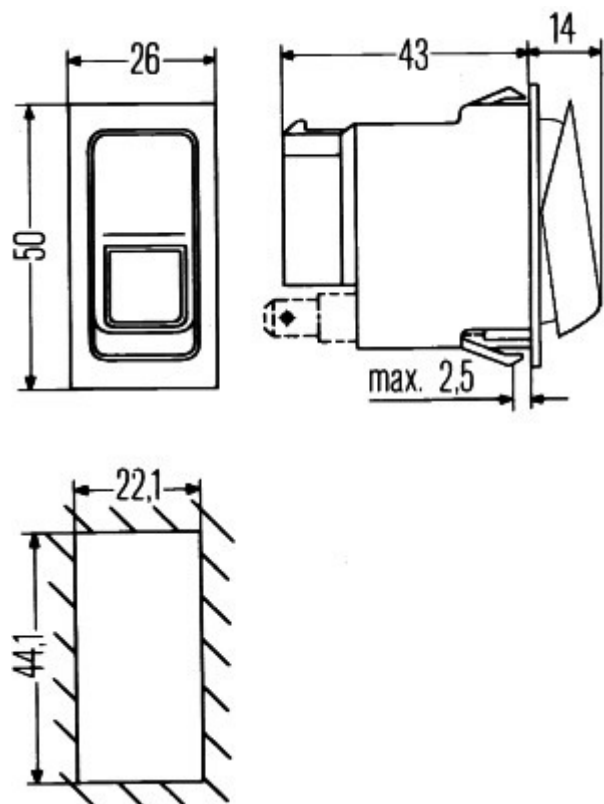
# ELECTRICAL CIRCUIT DIAGRAM



**ATTENTION!**  
LED, observe plus marking..

# CUT-OUT FOR SWITCH

---





**HENLE Baumaschinentechnik GmbH**

Ringstrasse 9 · 89192 Rammingen

**PHONE:** +49 (0) 7345 - 96 77 0

**TELEFAX:** +49 (0) 7345 - 96 77 17

**E-MAIL:** [info@henle-baumaschinentechnik.de](mailto:info@henle-baumaschinentechnik.de)

**HOMEPAGE:** [www.henle-baumaschinentechnik.de](http://www.henle-baumaschinentechnik.de)

**CONVINCING QUALITY. TOP SERVICE.**

