

ASSEMBLY INSTRUCTIONS HYDRAULIC-KIT

for hydraulic quick couplers with single-acting cylinder



CONTENTS

NOTES	4
INSTALLATION-KIT	5
PROCEDURE	7
HYDRAULIC CIRCUIT DIAGRAM	8
ELECTRICAL CIRCUIT DIAGRAM	9
CUT-OUT FOR SWITCH	11

IMPRINT

HENLE Baumaschinentechnik GmbH

Ringstrasse 9
89192 Rammingen

Phone: +49 (0) 73 45 - 96 77 0
Fax: +49 (0) 73 45 - 96 77 17

info@henle-baumaschinentechnik.de
www.henle-baumaschinentechnik.de

In the latest standard for earth-moving machinery, the legislator stipulates that hydraulic quick couplers with wedge-shaped locking systems must be permanently pressurized (see DIN EN 471-1).

This means that a separate hydraulic circuit must be used for the „open/close quick coupler“ functions. If necessary – and if not available – this must be retrofitted to the excavator.

The installation kit offered by HENLE Baumaschinentechnik GmbH provides you with a basic kit consisting of parts that must be used in any case: control block, rocker switch and signal generator.

However, due to the large number of excavator types and the constantly changing equipment, it is not possible for us to offer a complete kit that is „tailor-made“ specifically for your excavator.

Power and hydraulic lines are not included in the scope of delivery and must be configured yourself depending on the excavator type.

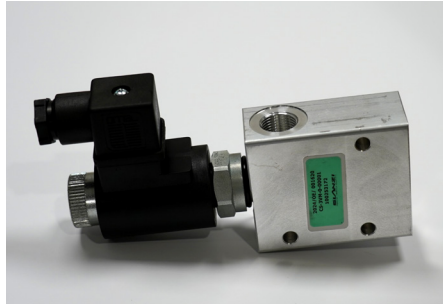
SCOPE OF DELIVERY INSTALLATION-KIT

Position	Name	Pieces
1	Kit control block 12V/24V	1
2	Rocker switch complete	1
3	Signal generator 12V/24V	1

SCOPE OF DELIVERY INSTALLATION-KIT

POSITION 1

Kit control block 12V/24V



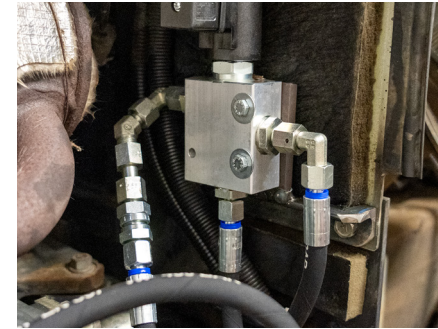
POSITION 2

Rocker switch complete



POSITION 3

Signal generator 12V/24V



STEP 1

Find an easily accessible and sufficiently large space in the engine compartment for the kit control block.

STEP 2

Lay the hydraulic lines directly from the pumps to the control block.

STEP 3

Lay the hydraulic line from the oil tank to the control block.

STEP 4

Install the kit control block in the engine room and connect it.



STEP 5

Lay the hydraulic lines from the control block over the excavator arm to the quick coupler. Make sure that the lines are not kinked and that there are no chafe marks.

STEP 6

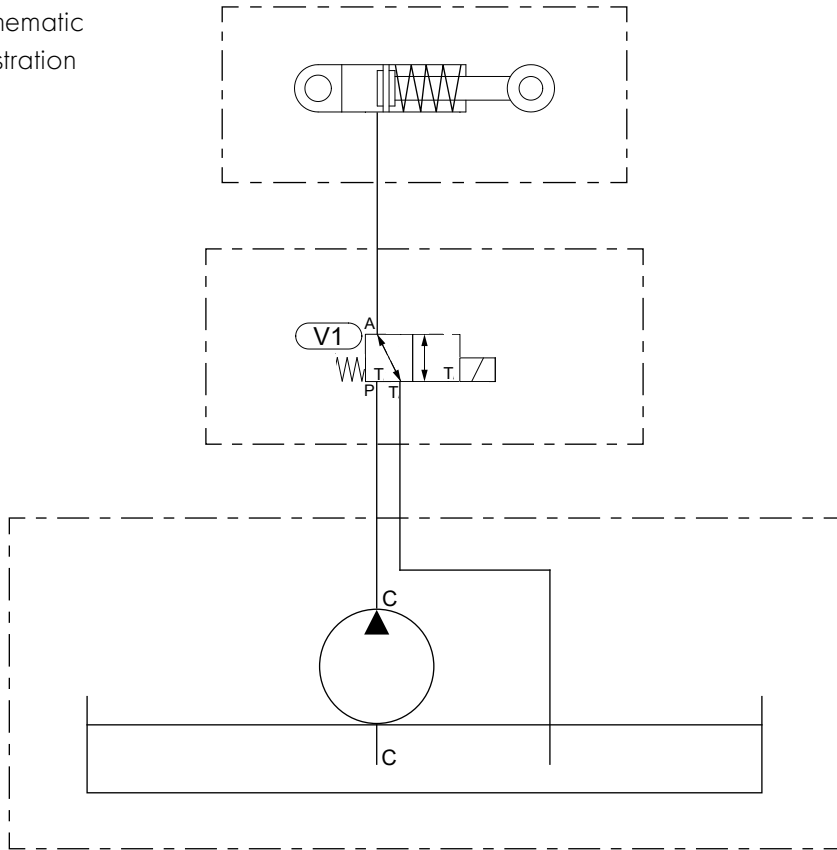
Install the rocker switch and signal generator in the machine room. Connect them according to the electrical circuit diagram.

STEP 7

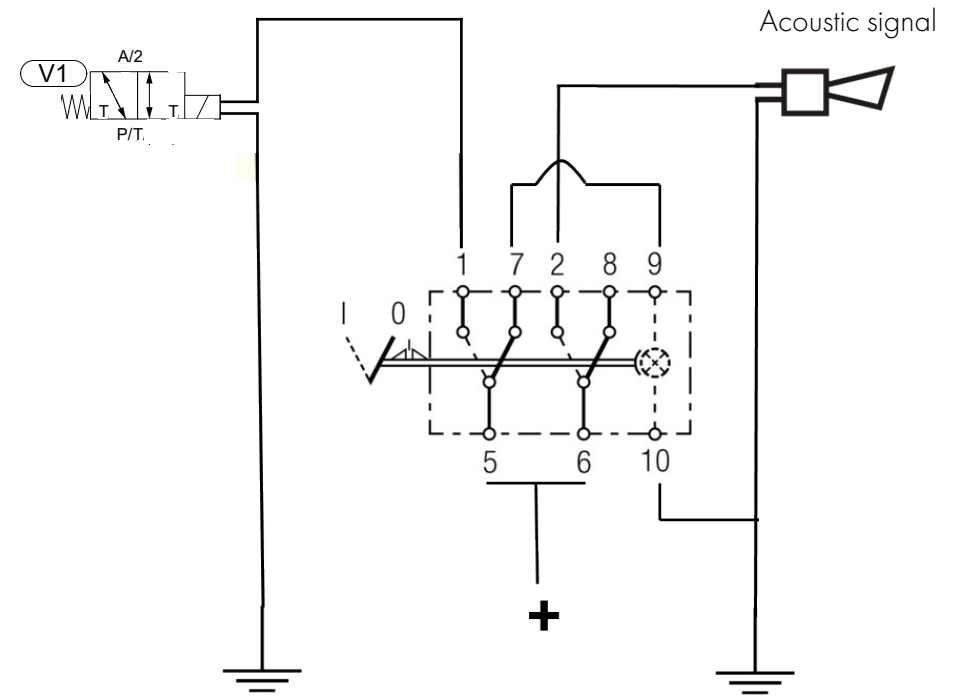
Check the function.

HYDRAULIC CIRCUIT DIAGRAM

Schematic illustration

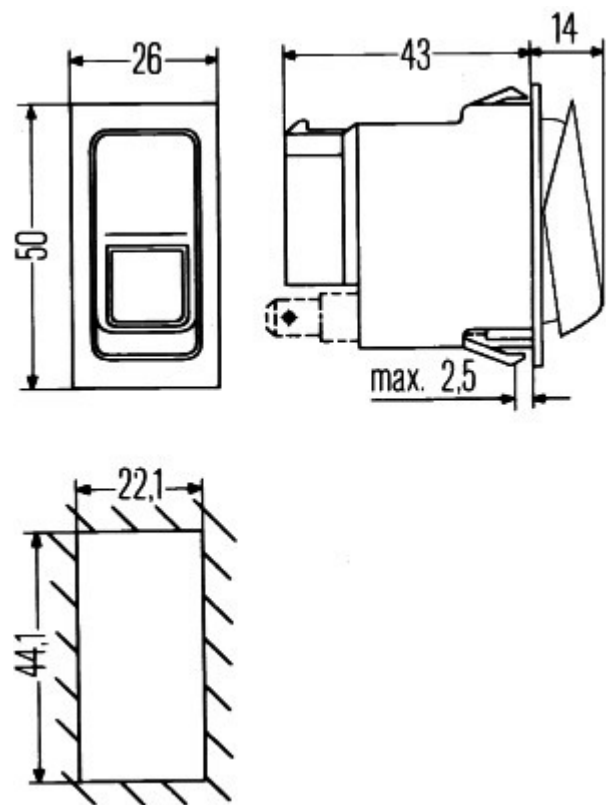


ELECTRICAL CIRCUIT DIAGRAM



ATTENTION!
LED, observe plus marking..

CUT-OUT FOR SWITCH





HENLE Baumaschinentechnik GmbH

Ringstrasse 9 · 89192 Rammingen

PHONE: +49 (0) 7345 - 96 77 0

TELEFAX: +49 (0) 7345 - 96 77 17

E-MAIL: info@henle-baumaschinentechnik.de

HOMEPAGE: www.henle-baumaschinentechnik.de

CONVINCING QUALITY. TOP SERVICE.

